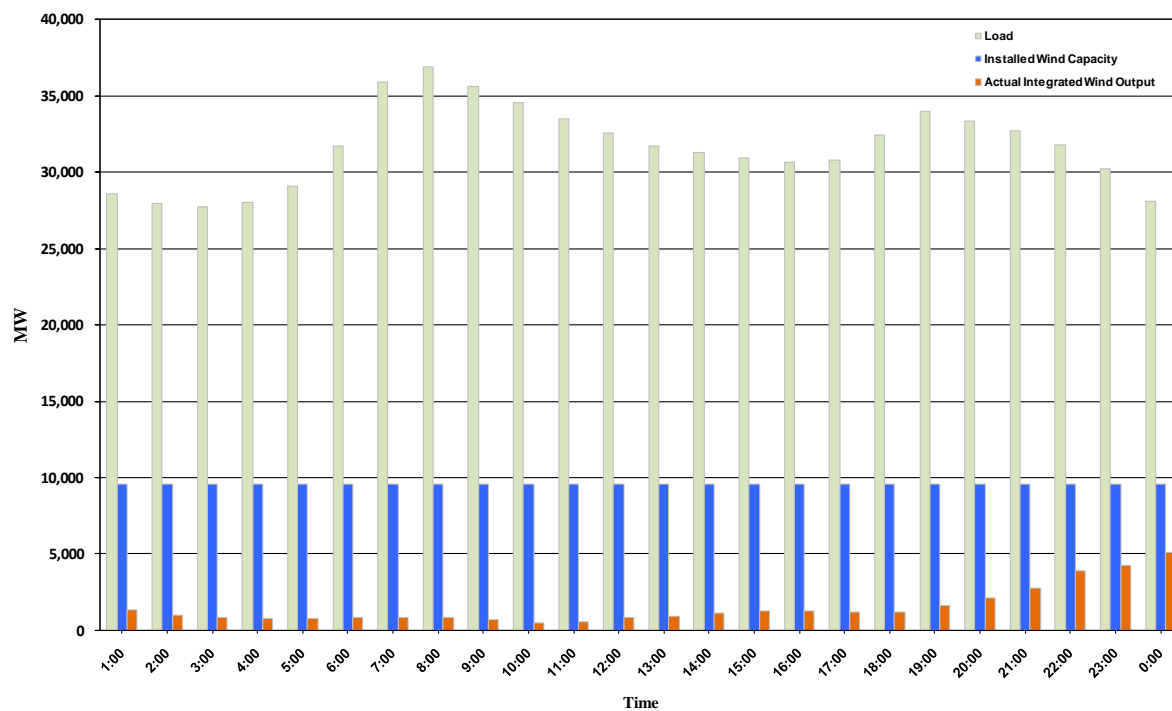




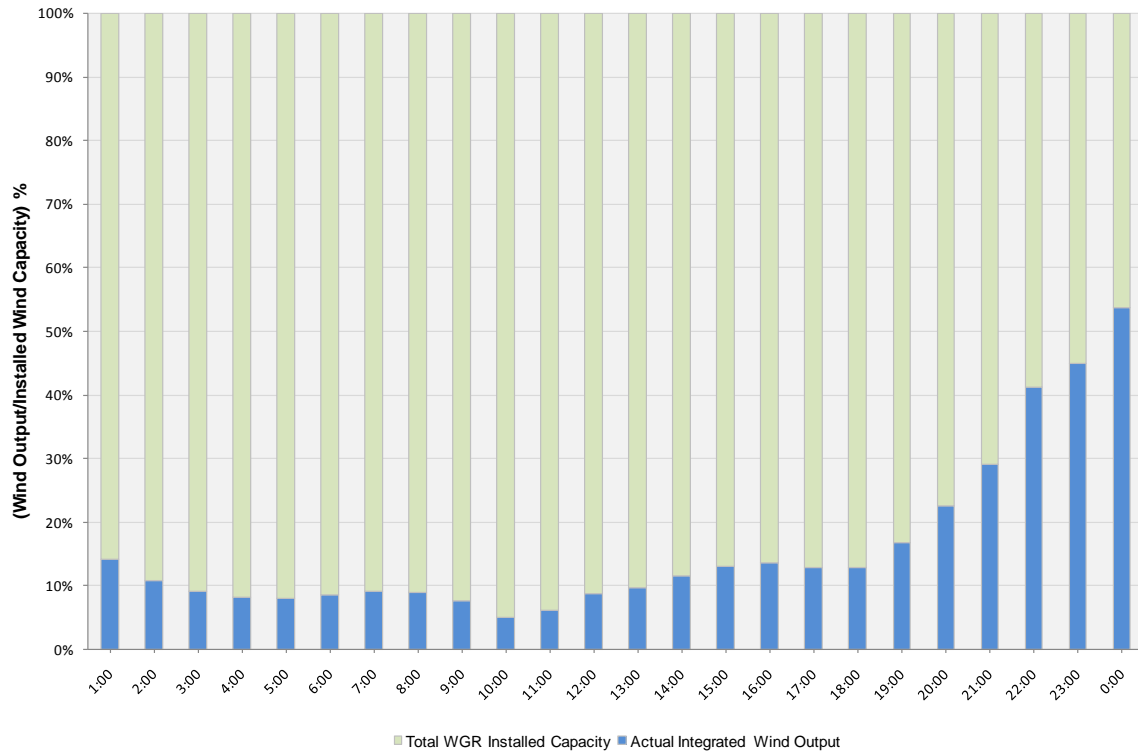
ERCOT Grid Operations Wind Integration Report: 12/10/10

Peak Load	36,912 MW
Load Peak Hour	08
Wind Record 06/12/10	7,016 MW
Max Wind value	5,531 MW
Wind Peak Hour	22:59:32
Wind Integration %	19.00

Hourly Average Actual Load vs. Actual Wind Output
12-10-2010



Actual Wind Output as a Percentage of the Total Installed Wind Capacity
12-10-2010



Actual Wind Output as a Percentage of the ERCOT Load
12-10-2010

